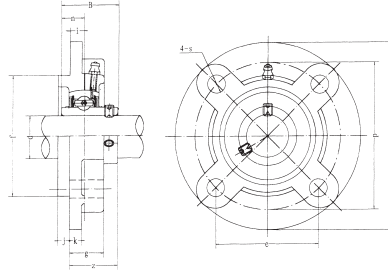


UCFC 2 (normal-duty)



Unit No.	Dimensions ^{mm} / _{inch}														Bolt Size ^{mm} / _{inch}	Bearing No.	Housing No.	Weight (kg)
	d	a	p	e	i	S	j	k	g	f	z	B	n					
UCFC 201	12	100	78	55.1	10	12	5	7	20.5	62	28.3	31	12.7	M10	UC 201	FC204	0.73	
UCFC 201-8	3/4	3-15/16	3-5/64	2-11/64	25/64	15/32	13/64	9/32	13/16	2.4409	1-1/8	1.2205	0.500	3/8	UC 201-8		0.72	
UCFC 202	15	100	78	55.1	10	12	5	7	20.5	62	28.3	31	12.7	M10	UC 202	FC204	0.72	
UCFC 202-9	9/16	3-15/16	3-5/64	2-11/64	25/64	15/32	13/64	9/32	13/16	2.4409	1-1/8	1.2205	0.500	3/8	UC 202-9		0.72	
UCFC 202-10	5/8														UC 202-10		0.72	
UCFC 203	17	100	78	55.1	10	12	5	7	20.5	62	28.3	31	12.7	M10	UC 203	FC204	0.71	
UCFC 203-11	11/16	3-15/16	3-5/64	2-11/64	25/64	15/32	13/64	9/32	13/16	2.4409	1-1/8	1.2205	0.500	3/8	UC 203-11		0.70	
UCFC 204	20	100	78	55.1	10	12	5	7	20.5	62	28.3	31	12.7	M10	UC 204	FC204	0.69	
UCFC 204-12	3/4	3-15/16	3-5/64	2-11/64	25/64	15/32	13/64	9/32	13/16	2.4409	1-1/8	1.2205	0.500	3/8	UC 204-12		0.69	
UCFC 205	25	115	90	63.6	10	12	6	7	21	70	29.8	34.1	14.3	M10	UC 205	FC204	1.00	
UCFC 205-13	13/16														UC 205-13		1.04	
UCFC 205-14	7/8	4-17/32	3-35/64	2-1/12	25/64	15/32	15/64	9/32	53/64	2.7559	1-11/64	1.3425	0.563	3/8	UC 205-14	FC205	1.03	
UCFC 205-15	15/16														UC 205-15		1.01	
UCFC 205-16	1														UC 205-16		1.00	
UCFC 206	30	125	100	70.7	10	12	8	8	23	80	32.2	38.1	15.9	M10	UC 206	FC206	1.30	
UCFC 206-17	1-1/16														UC 206-17		1.31	
UCFC 206-18	1-1/8	4-59/64	3-15/16	2-25/32	25/64	15/32	5/16	5/16	29/32	3.1496	1-17/64	1.5000	0.626	3/8	UC 206-18		1.32	
UCFC 206-19	1-3/16														UC 206-19		1.30	
UCFC 206-20	1-1/4														UC 206-20		1.29	
UCFC 207	35	135	110	77.8	11	14	8	9	26	90	36.4	42.9	17.5	M12	UC 207	FC207	1.81	
UCFC 207-20	1-1/4														UC 207-20		1.87	
UCFC 207-21	1-5/16	5-5/16	4-21/64	3-1/16	7/16	35/64	5/16	23/64	1-1/32	3.5433	1-7/16	1.6890	0.689	7/16	UC 207-21		1.84	
UCFC 207-22	1-3/8														UC 207-22		1.81	
UCFC 207-23	1-7/16														UC 207-23		1.78	
UCFC 208	40	145	120	84.8	11	14	10	9	26	100	41.2	49.2	19	M12	UC 208	FC208	2.14	
UCFC 208-24	1-1/2	5-45/64	4-23/32	3-11/32	7/16	35/64	25/64	23/64	1-1/32	3.9370	1-5/8	1.9370	0.748	7/16	UC 208-24		2.18	
UCFC 208-25	1-9/16														UC 208-25		2.15	
UCFC 209	45	160	132	93.3	10	16	12	14	26	105	40.2	49.2	19	M14	UC 209	FC209	2.68	
UCFC 209-26	1-5/8														UC 209-26		2.78	
UCFC 209-27	1-11/16	6-19/64	5-13/64	3-43/64	25/64	5/8	15/32	35/64	1-1/32	4.1339	1-37/64	1.9370	0.748	1/2	UC 209-27		2.74	
UCFC 209-28	1-3/4														UC 209-28		2.70	
UCFC 210	50	165	138	97.6	10	16	12	14	28	110	42.6	51.6	19	M14	UC 210	FC210	2.90	
UCFC 210-29	1-13/16														UC 210-29		3.02	
UCFC 210-30	1-7/8	6-1/2	5-7/16	3-27/32	25/64	5/8	15/32	35/64	1-7/64	4.3307	1-11/16	2.0315	0.748	1/2	UC 210-30		2.97	
UCFC 210-31	1-15/16														UC 210-31		2.92	
UCFC 210-32	2														UC 210-32		2.88	
UCFC 211	55	185	150	106.1	13	19	12	15	31	125	46.4	55.6	22.2	M16	UC 211	FC211	4.01	
UCFC 211-32	2														UC 211-32		4.16	
UCFC 211-33	2-1/16	7-9/32	5-29/32	4-3/16	33/64	3/4	15/32	19/32	1-7/32	4.9213	1-53/64	2.1890	0.874	5/8	UC 211-33		4.10	
UCFC 211-34	2-1/8														UC 211-34		4.05	
UCFC 211-35	2-3/16														UC 211-35		3.99	
UCFC 212	60	195	160	113.1	17	19	12	15	36	135	56.7	65.1	25.4	M16	UC 212	FC212	4.94	
UCFC 212-36	2-1/4														UC 212-36		5.07	
UCFC 212-37	2-5/16	7-11/16	6-19/64	4-29/64	43/64	3/4	15/32	19/32	1-27/64	5.3150	2-15/64	2.5630	1.000	5/8	UC 212-37		4.99	
UCFC 212-38	2-3/8														UC 212-38		4.92	
UCFC 212-39	2-7/16														UC 212-39		4.85	
UCFC 213	65	205	170	120.2	16	19	14	15	36	145	55.7	65.1	25.4	M16	UC 213	FC213	5.65	
UCFC 213-40	2-1/2	8-5/64	6-11/16	4-47/64	5/8	3/4	35/64	19/32	1-27/64	5.5118	1-3/16	2.5630	1.000	5/8	UC 213-40		5.74	
UCFC 213-41	2-9/16														UC 213-41		5.65	
UCFC 214	70	215	177	125.1	17	19	14	18	40	150	61.4	74.6	30.2	M16	UC 214	FC214	6.95	
UCFC 214-42	2-5/8														UC 214-42		7.16	
UCFC 214-43	2-11/16	8-15/32	6-31/32	4-59/64	43/64	3/4	35/64	23/32	1-37/64	5.9055	1-13/32	2.9370	1.189	5/8	UC 214-43		7.06	
UCFC 214-44	2-3/4														UC 214-44		6.96	
UCFC 215	75	220	184	130.1	18	19	16	18	40	160	62.5	77.8	33.3	M16	UC 215	FC215	7.56	
UCFC 215-45	2-13/16														UC 215-45		7.81	
UCFC 215-46	2-7/8	8-21/32	7-1/4	5-1/8	23/32	3/4	5/8	23/32	1-37/64	6.2992	2-15/32	3.0630	1.311	5/8	UC 215-46		7.70	
UCFC 215-47	2-15/16														UC 215-47		7.59	
UCFC 215-48	3														UC 215-48		7.47	
UCFC 216	80	240	200	141.4	18	23	16	18	42	170	67.3	82.6	33.3	M20	UC 216	FC216	9.15	
UCFC 216-49	3-1/16														UC 216-49		9.28	
UCFC 216-50	3-1/8	9-29/64	7-7/8	5-9/16	23/32	29/32	5/8	23/32	1-21/32	6.6929	2-21/32	3.2520	1.311	3/4	UC 216-50		9.20	
UCFC 216-51	3-3/16														UC 216-51		9.07	
UCFC 217	85	250	208	147.1	18	23	18	20	45	180	69.6	85.7	34.1	M20	UC 217	FC217	10.81	
UCFC 217-52	3-1/4														UC 217-52		11.03	
UCFC 217-53	3-5/16	9-27/32	8-3/16	5-51/64	23/32	29/32	23/32	25/32	1-29/32	7.0866	2-3/4	3.3740	1.343	3/4	UC 217-53		10.89	
UCFC 217-55	3-7/16														UC 217-55		10.60	
UCFC 218	90	265	220	155.5	22	23	18	20	50	190	78.3	96	39.7	M20	UC 218	FC218	12.96	
UCFC 218-56	3-1/2	10-7/16	8-21/32	6-1/8	55/64	29/32	23/32	25/32	1-31/32	7.4803	3-3/32	3.7795	1.5630	3/4	UC 218-56		13.07	